

**JAMES LAKE**

*Your Lake, Your Story*

LILLY CENTER FOR  
**LAKES &  
STREAMS™**



**GRACE**  
COLLEGE

# James Lake

**LAKE SIZE:** 278 acres

**WATERSHED SIZE:**  
35,776 acres

**MAX DEPTH:** 62 feet

**AVERAGE DEPTH:** 27 feet

**INLETS:** Tippecanoe River  
from East

**OUTLETS:** To Lake  
Tippecanoe

**ACCESS:** Public: 1 mi S. of N  
Webster on SR 13, 2 mi W on  
Armstrong Rd

**RECREATION:** Boat, Fish,  
Ski, Swim

**LAKE BOTTOM:** Clay, Gravel,  
Muck, Sand

**BEST FISHING:** Bluegill,  
Redear, Catfish, Black  
Crappie, Largemouth Bass,  
Northern Pike, Yellow Perch



# JAMES LAKE :

# Past, Present & Future

Since glaciers first formed this lake, the health of James Lake has been of importance to the surrounding residents, businesses, families, and even the economy. Understanding the past of James Lake helps in guiding present and future research. Trends on local lakes assist in providing context for years past as well as years to come. Each lake is different with a story and rhythm of its own. Families on James Lake, whether they have visited the lake for one summer or for one century, have shaped this lake just as it has shaped them. And now you have the power to leave a legacy for a healthy James Lake for future generations.

## ***Our Study:***

The Lilly Center for Lakes & Streams has been closely studying local lakes since 2007. However, lakes in Kosciusko County have a wonderful heritage of scientific research going back to 1875. Understanding the health of local lakes in the context of their history can assist in guiding future research and actions. As we investigated the past and the present of local lakes, we researched and collected data on water clarity, nutrients, dissolved oxygen and other parameters. This is a summary of our results and research specific to your home: James Lake. Past data was collected only from university and government sources during the months of July and August. Both past and present research uses data collected in open water above the deepest point in the lake. This research and its publication was funded by the K21 Health Foundation, Kosciusko County Convention Recreation and Visitors Commission, Grace College and private donors.

## ***Table of Contents***

### **THE HISTORY OF JAMES LAKE**

How the Lake Was Formed .....	5
The Turn of the Century .....	6
Research Through the Decades .....	7
Historical Water Clarity.....	8
Historical Phosphorus Levels.....	9
Historical Temperature.....	10
Historical Dissolved Oxygen.....	11
Norma Ferguson: A Legacy on the Lake .....	12

### **JAMES LAKE TODAY**

An Economic Force .....	15
Current Water Clarity.....	16
Current Nutrient Levels.....	18
Current Dissolved Oxygen .....	20
Blue-Green Algae.....	22
Microcystin Toxin .....	24
<b>Why the Data Matters.....</b>	<b>26</b>

### **THE FUTURE OF JAMES LAKE**

The Lilly Center for Lakes & Streams.....	29
Preparing for the Future .....	30
New Facilities .....	32
What You Can Do to Help .....	34
John Warren: Making the Lake the Best it Can Be.....	36
It's Time to Make a Difference.....	38



# THE HISTORY OF JAMES LAKE

# How the Lake Was Formed

James Lake is a glacial lake. It was formed by the movement of glaciers which retreated from the land and left behind large deposits of ice and glacial material. These deposits left depressions in the land and as they melted they created large pools of water, or glacial lakes. This and other natural Kosciusko County lakes are glacial lakes. The nearby Great Lakes are the largest glacial lakes in the world.



# THE TURN OF THE CENTURY

*Until the start of the 1900s, Indiana lakes had not yet been widely viewed as subjects for research.*

Rather, local lakes were places of recreation and fellowship. Throughout the 1900s, businesses were established on the Tippecanoe lakes to make them a vacationer's paradise. Patona Bay Marina and Resort was established in 1909, Tippecanoe Boat Company was established in 1925, and Tippecanoe Lake Country Club opened the following year in 1926. In addition to these attractions, Lake Tippecanoe was also home to the once traditional concert hall, Tippy Dance Hall, which at one time boasted such acts as Duke Ellington and Louis Armstrong.



---

## RESEARCH ON JAMES LAKE

---

# Through the Decades

**1875:** Indiana Geological Survey examines and collects data on lakes in Kosciusko County.

**1912:** Indiana University gathers temperature profiles, dissolved oxygen profiles, and algae abundance data for Lake Tippecanoe.

*1900s*

*1910s*

*1920s*

*1930s*

*1940s*

*1950s*

**1896-1902:** The Indiana University Biological Station collects temperature profiles and algae species data. Student room and board costs are \$1.25-\$3.00 per week.

**1946-1948:** Indiana Department of Conservation studies Lake Tippecanoe for general hydrology, background history, ice thickness data, and temperature profiles.

**1973:** EPA conducts lakes survey which includes James Lake to collect temperature and dissolved oxygen profiles.

**2007-PRESENT:** Grace College's Lilly Center for Lakes & Streams collects data on Secchi depth, temperature profiles, dissolved oxygen profiles, nutrients, algae toxins and algae counts on James Lake.

*1960s*

*1970s*

*1980s*

*1990s*

*2000s*

*2010s*

● **1989, 1994, 1998, 2003, 2006, 2011, 2012:** Indiana University Clean Lakes Program collects James Lake data on Secchi depth, nutrients, and algae counts.

**2001-PRESENT:** Volunteers collect Secchi depth and nutrient data on James Lake as part of Indiana University volunteer program.

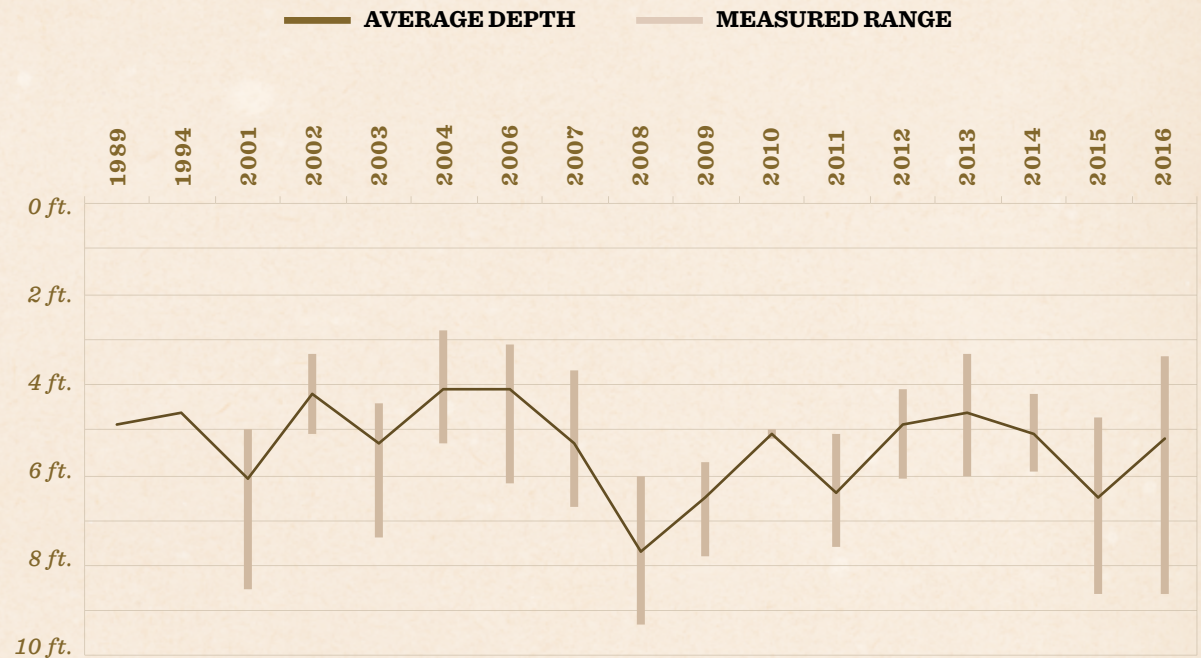
# Water Clarity

The first Secchi disk was created in 1865 by Father Pietro Angelo Secchi, who was the pope's scientific adviser. Secchi had been asked to create a new and reliable transparency instrument to measure water clarity, so he created an all-white disk which could be lowered into water to measure clarity depth. On April 20, 1865, the first Secchi disk was lowered by Secchi from the papal stream yacht into the Mediterranean Sea.<sup>1</sup> To read more about the Secchi disk and the importance of measuring water clarity, see page 18.



**Water Clarity Pioneer**  
**Father Pietro Angelo Secchi**

## HISTORY OF WATER CLARITY IN JAMES LAKE



### DATA SUMMARY:

James Lake water clarity increased significantly in July and August from 2001 to 2011 and then experienced a noticeable decrease in recent years. Water clarity decreases could be due to more algae growth as a result of increased nutrient (phosphorus and nitrogen) levels. Increases in water clarity are likely due to less algae which could be the result of less nutrients or high populations of invasive zebra mussels which eat some types of algae.

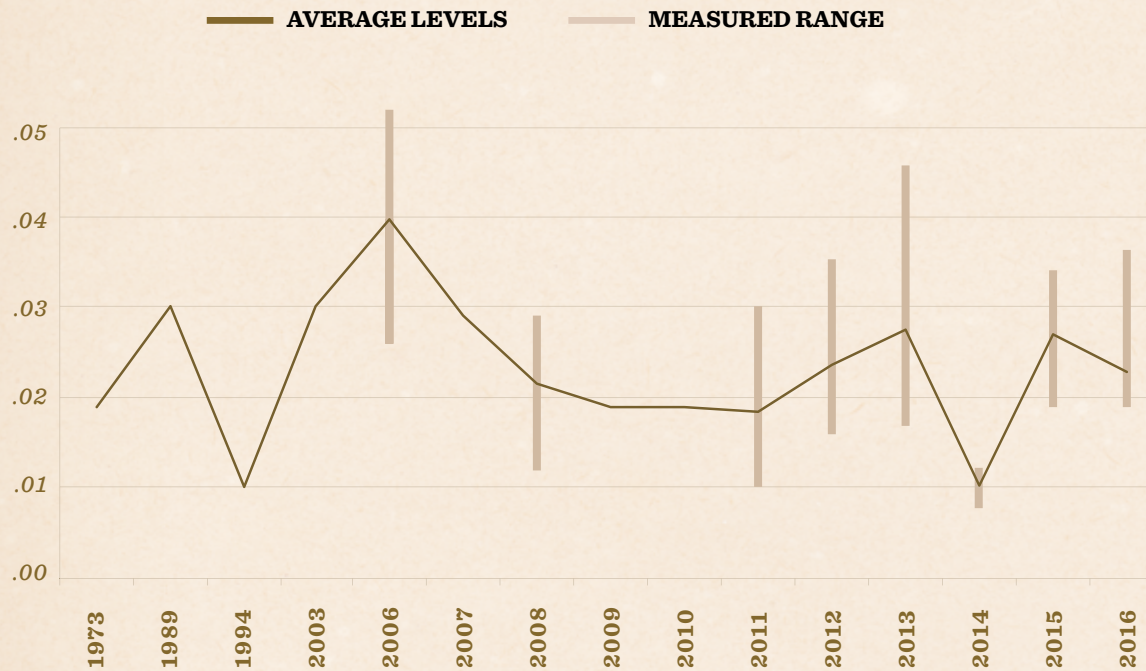


# HISTORY OF PHOSPHORUS LEVELS IN JAMES LAKE

## Phosphorus Levels

The Experimental Lakes Area (ELA) in Ontario, Canada is a laboratory of 58 small lakes and their watersheds. They are unaffected by the influence of humans because they have been set aside for scientific research.<sup>2</sup>

One of the issues the ELA has had a profound impact on is the understanding of eutrophication, or the process leading to over-productive lakes. In 1974, Dr. David William Schindler found that eutrophication occurs in large part due to land runoff and much of the algae growth which occurs in lakes is primarily as a result of phosphorus rather than nitrogen or carbon.<sup>2</sup>



### DATA SUMMARY:

James Lake total phosphorus levels in July and August do not show any obvious trends over the past 40 years. Over this time period, surface water phosphorus levels range from 0.01 to 0.06 mg/L; these levels are all above the Environmental Protection Agency recommended guidelines except one measurement.

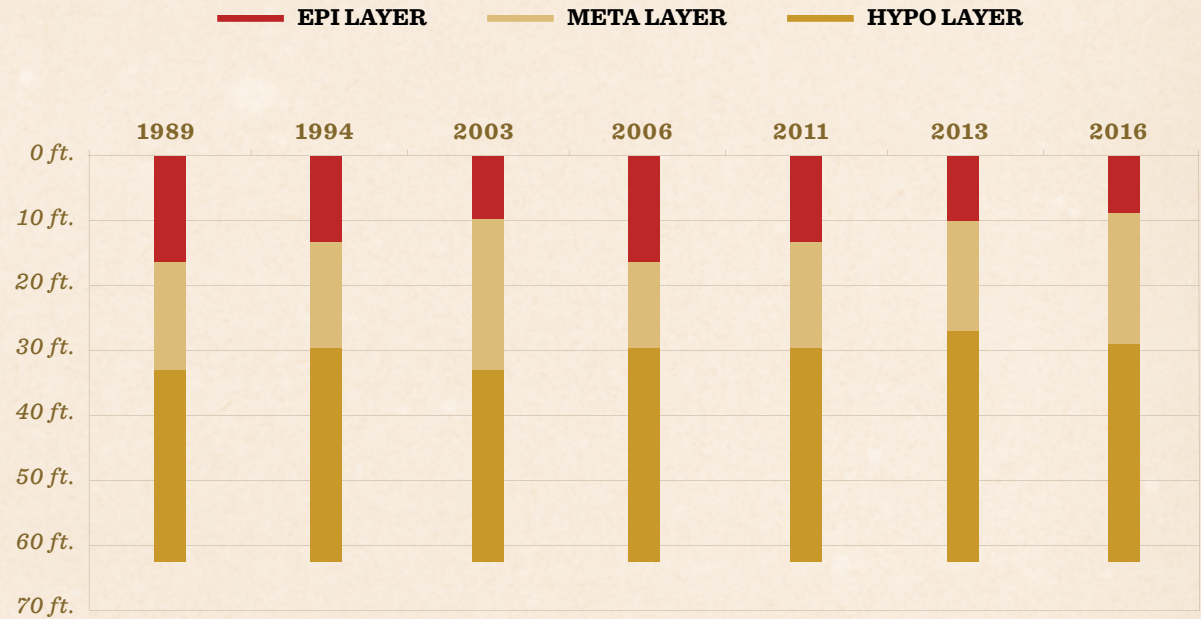
# Water Temp.

**EPI LIMNION LEVEL:** The surface layer of a lake. This layer is the warmest and mixes from recreational activity and wind blowing across the lake surface.

**METALIMNION LEVEL:** The layer of water between the epilimnion and the hypolimnion. Water temperature changes quickly from warm to cold within this zone.

**HYPOLIMNION LEVEL:** The bottom layer of water in a lake which is colder than the top layers. This layer is isolated from the rest of the lake all summer and most of the fall, so it stays cold. Oxygen from the other two layers cannot come down into this layer.

## HISTORY OF WATER TEMPERATURE IN JAMES LAKE

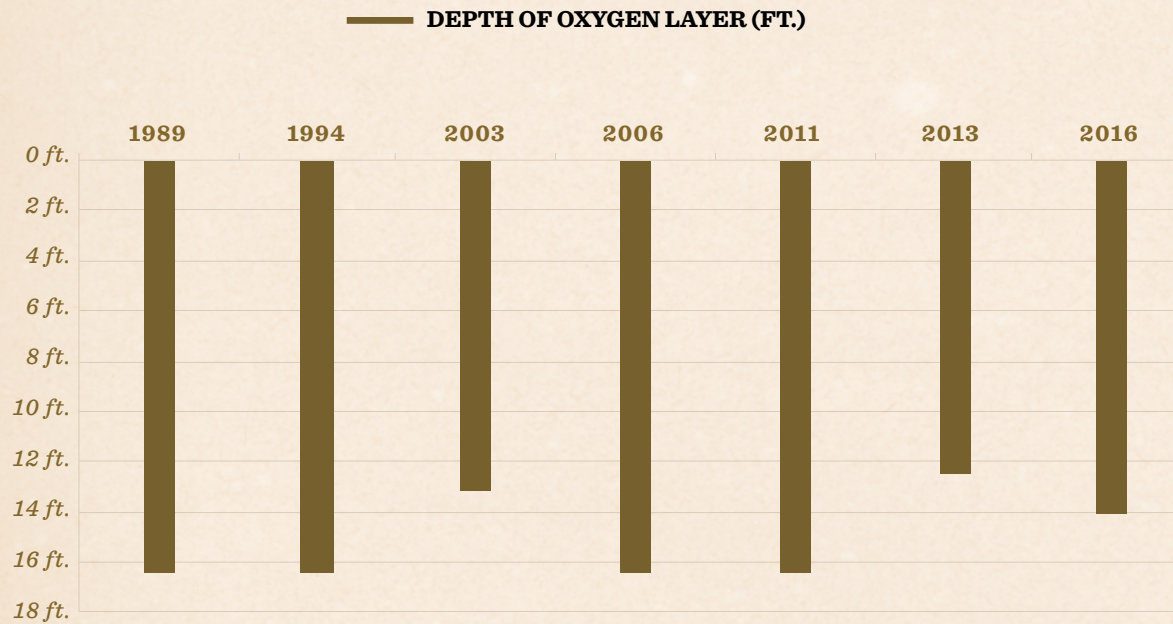


### DATA SUMMARY:

James Lake water temperature layers seem to have changed over the past 25 years. Over this time period, the warm surface water layer may have become thinner in James Lake while the bottom cold water layer may have become slightly thicker. You may have noticed this colder water layer at some time yourself if you have ever dived down deep into the lake.

# HISTORY OF DISSOLVED OXYGEN LEVELS

## IN JAMES LAKE



### DATA SUMMARY:

The oxygen layer depth in James Lake does not show any obvious trends over the last 25 years during July and August. A thinner oxygen layer limits the space that fish can live and forces fish to warmer surface water layer. Some fish cannot survive in warmer water which is likely why they are no longer able to survive in James Lake as recorded historically.

## *Dissolved Oxygen*

Dissolved oxygen is the major factor that determines where organisms can survive in an aquatic system. During the summer, many lakes become layered based on temperature — and the bottom layer is often depleted of oxygen. This is because of chemical reactions that occur when dead plants decay on the bottom. Since the layers do not mix in the summer, the lake is not able to replenish its oxygen through mixing of lake waters. Oxygen depletion also occurs in the winter when surface ice keeps oxygen from entering the water from the air above.

Before dissolved oxygen sensors were developed, scientists used the Winkler method to measure dissolved oxygen in lakes and streams. The Winkler method is a technique which uses “titration,” or the addition of chemical reagents, to determine dissolved oxygen presence. In this method, water is added to a sample bottle and a series of reagents are added. These reagents make an acidic compound, to which the titrating compound is added to neutralize the mixture. The mixture eventually changes colors indicating the dissolved oxygen concentration.<sup>3</sup>

# *A Legacy on the Lake*

In the 1980s, Norma and her family bought a small cottage on Oswego Lake. Growing up, her children learned about boating at Patona Bay and soon, the family built two homes on Lake Tippecanoe so they could live on the lake full-time. Norma's children grew up to love boating and now they have kids of their own on the lakes. Her grandchildren enjoy visiting and spending time at Camp Crosley, located on the shore of James Lake.

Norma explained that she loves Lake Tippecanoe because "It brings family and friends together... it's so peaceful and relaxing!" But she also mentioned that "If the lake isn't clean, it isn't appealing to people, and people and wildlife can get sick."

To Norma, local lakes are more than just bodies of water, they are part of her family's heritage. She shared, "The lake has been part of our family for three generations... I don't see us ever leaving the lake." As for her favorite memory on the lake? "It has to be when everybody comes back to the lake for the Fourth of July!"

---

*Pick out the place where you want to help and then volunteer!*

---

In the future, Norma hopes to see a "...clean, healthy lake people can use." However, Norma knows that a clean lake isn't achieved overnight, "It's up to all of us to be good stewards and take care of the lakes," she explained. Norma and her husband, Jerry, take care of the lakes through their support of the Lilly Center for Lakes & Streams. She encouraged everyone around a lake to educate themselves about issues in local waterways, then "...pick out the place where you want to help and then volunteer!"



# JAMES LAKE TODAY

The Lilly Center for Lakes & Streams at Grace College samples streams which flow into James Lake biweekly year round, even in the most brutal of weather conditions. Additionally, the Lilly Center samples the lake weekly during the summer to gain a better understanding of the lake's condition during the months it is most active.

The data collected and presented in the following section is a summary of our results specific to your home: James Lake.

# An Economic Force

Kosciusko County lakes and streams not only contribute to the natural beauty and historical richness of our community, but also largely contribute to our county's current economy.

In fact, the Lilly Center for Lakes & Streams estimates that Kosciusko County lakes contribute approximately \$313 million to the county's economy annually. Understanding the impact of our lakes on the economy is an important part of James Lake's story now and into the future. Essentially, the health of James Lake can directly affect the health and success of the economy.



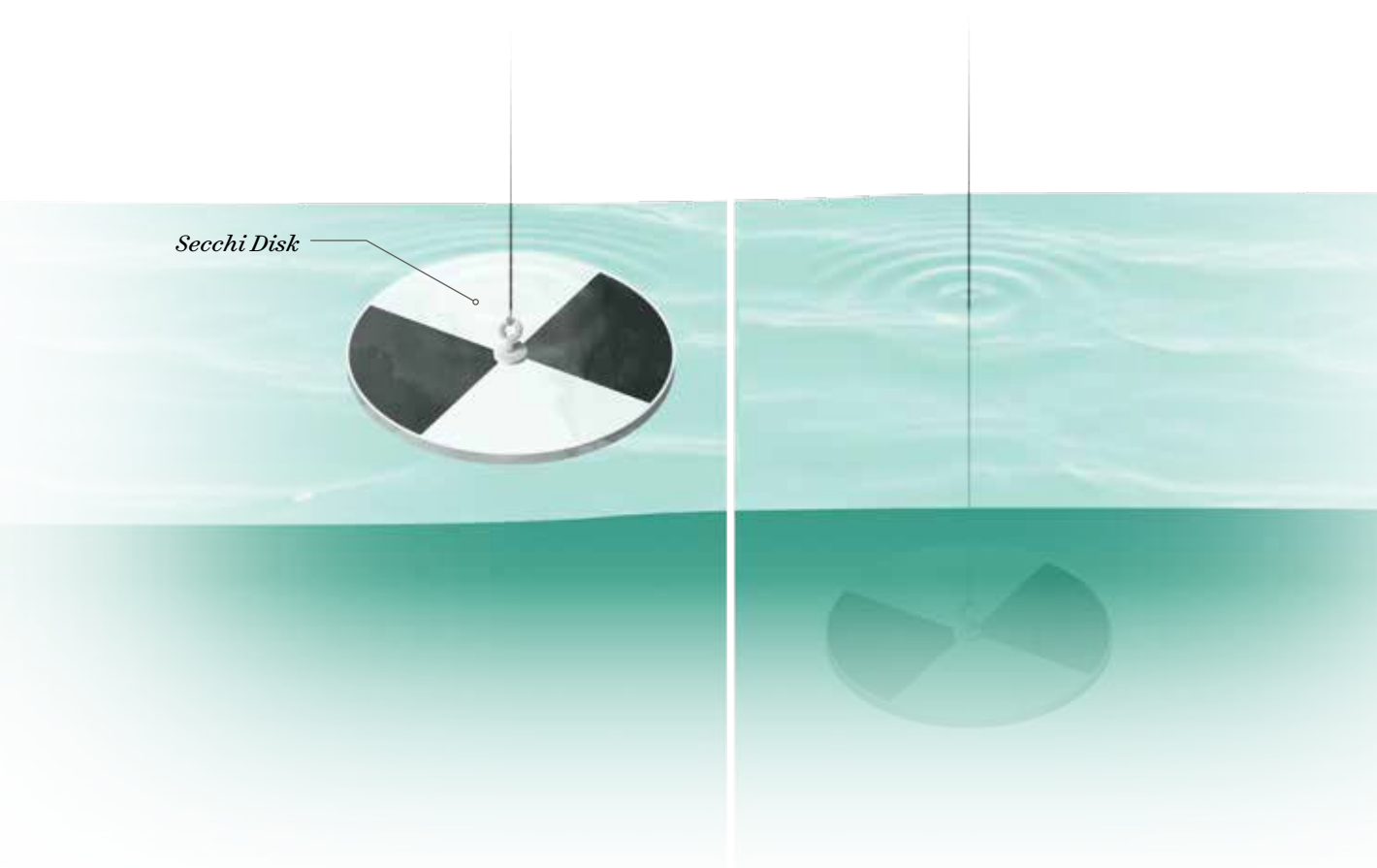
# Water Clarity

A MEASURE OF HOW FAR DOWN LIGHT PENETRATES THROUGH WATER

Today, we still measure water clarity using a Secchi disk, but why is consistent measurement of water clarity important? Measuring water clarity is the first step in assessing the health of a lake. A clear lake is generally a healthy lake, but murky water is a sign that something may be wrong — such as too much sediment, pollution or an overgrowth of algae. Once the clarity of water is assessed, it is important to conduct more tests to find out what is affecting the lake's water.

## HOW IS WATER CLARITY MEASURED?

Water clarity is measured with a tool called a Secchi disk. A Secchi disk is a frisbee-sized metal disk that is painted with a black and white pattern. The disk is attached to a string and lowered into the lake water until the black and white pattern is no longer visually distinct. The depth of the disk is recorded as a measure of the water's clarity.



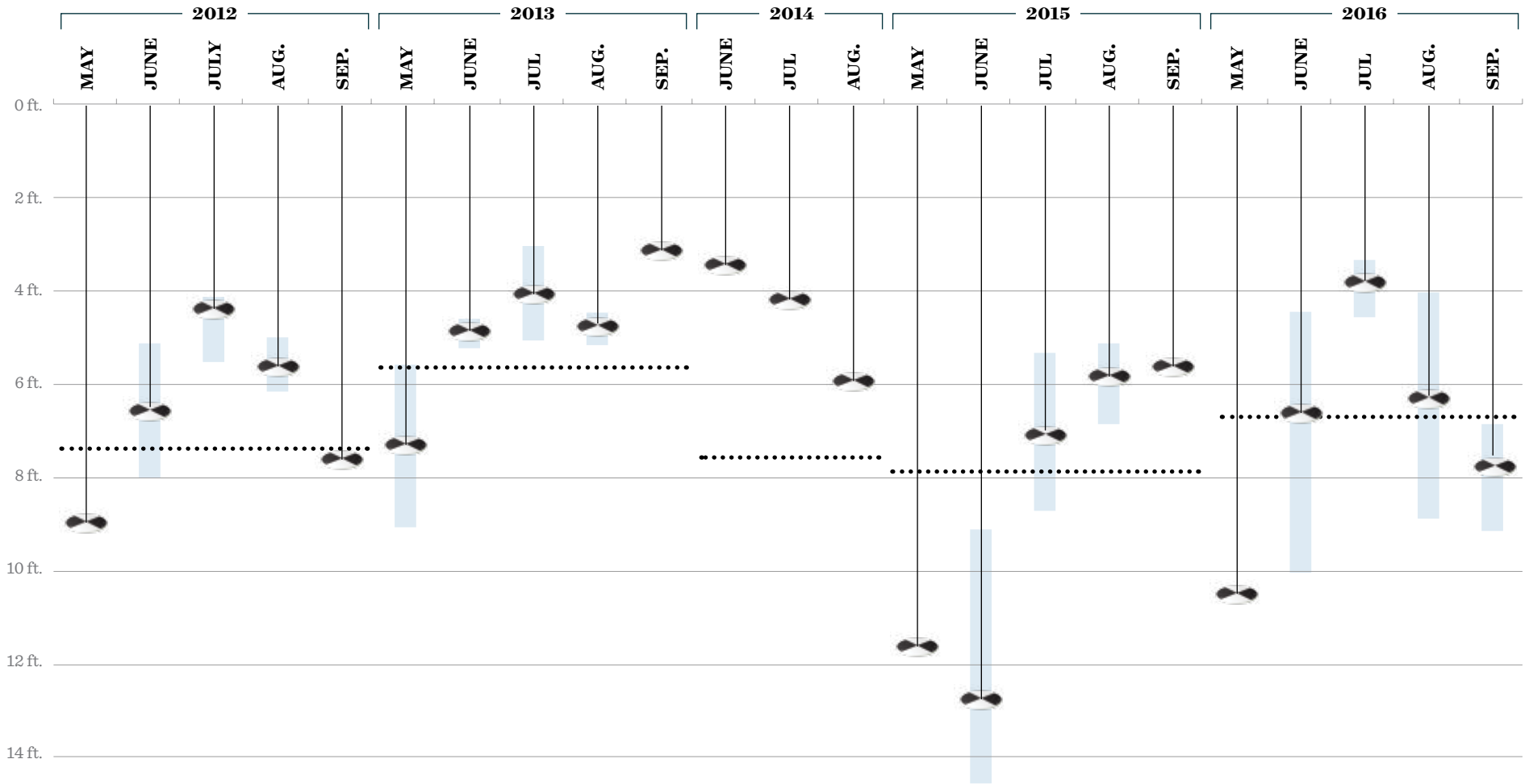


# Current Water Clarity

## IN JAMES LAKE

**DATA SUMMARY:** James Lake's water clarity was typically lowest June or July each year before improving toward the end of summer. This decreased clarity is likely due to generally higher nutrient (nitrogen and phosphorus) levels during these months compared to other months. James Lake's water clarity was similar to other all-sports lakes in the county.

-  JAMES LAKE AVERAGE
-  JAMES LAKE MEASURED RANGE
-  ALL-SPORTS LAKES IN COUNTY (YEARLY AVERAGE)



# Nutrients

---

SOLUBLE MINERALS THAT PLANTS NEED TO GROW

**TOO MUCH OF A GOOD THING:** Nutrients are good for lawns and gardens. But when they enter the lake in the form of fertilizers, human and animal waste, or yard waste, they make aquatic plants and algae grow too much. Two of the most important nutrients to study are phosphorus and nitrogen. They are responsible for a majority of weed and algae growth in the lake.

## NUTRIENTS, PLANTS AND ALGAE

The figure below shows how nutrients affect a lake's plant life

*Few Nutrients*

*Optimum Nutrient Levels*

*Nutrient Overload*

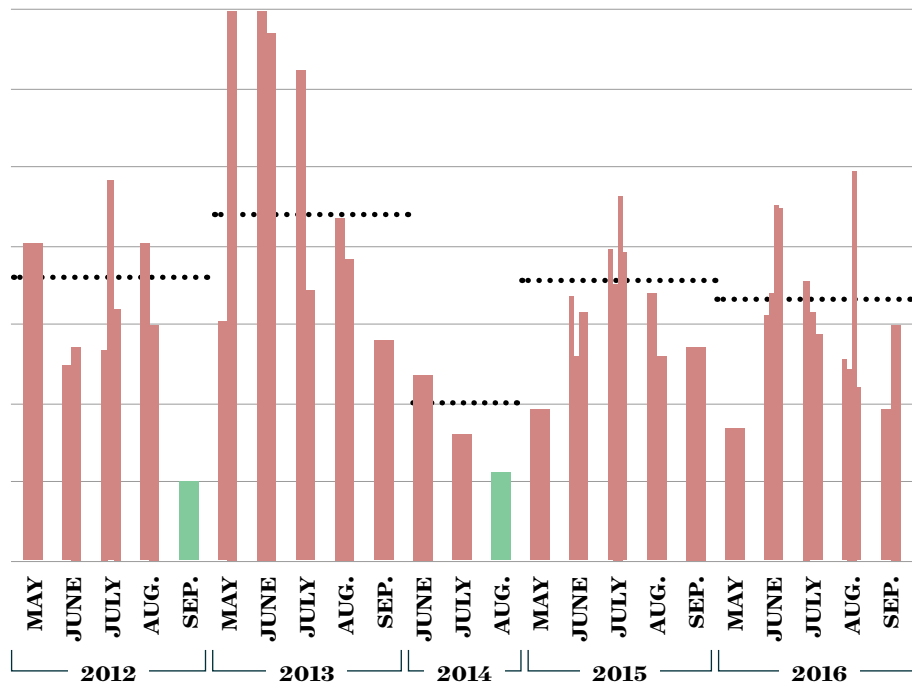


# Current Nutrient Levels

## IN JAMES LAKE

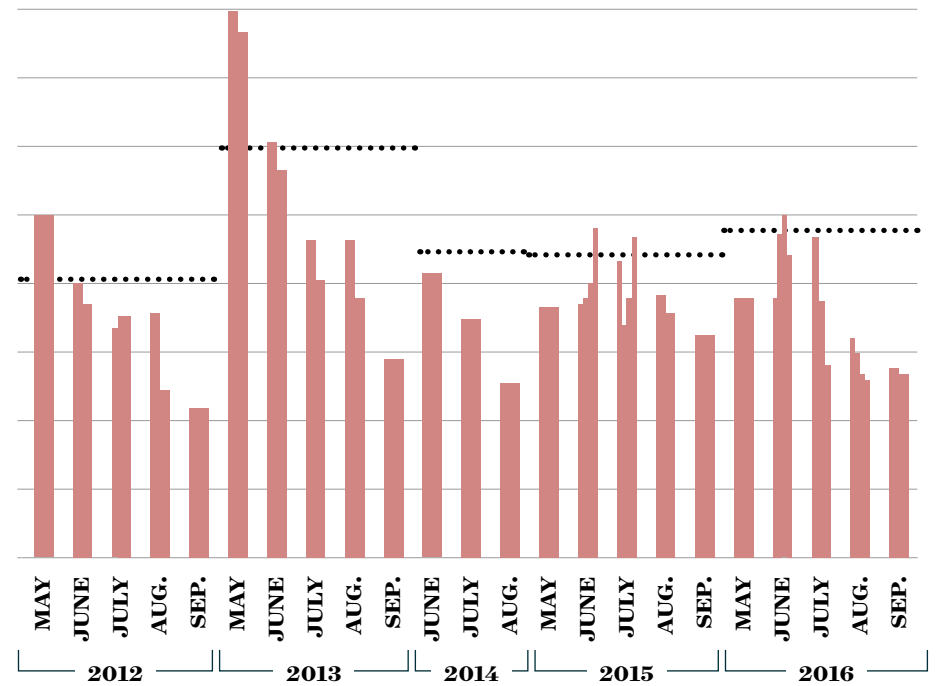
**DATA SUMMARY:** Both phosphorus and nitrogen levels in James Lake were almost always above the Environmental Protection Agency recommended guidelines. Overall, the months of June and July had the highest phosphorus and nitrogen levels. James Lake's phosphorus and nitrogen levels were usually lower compared to other all-sports lakes in the county.

|| JAMES LAKE    ..... ALL-SPORTS LAKES IN COUNTY (YEARLY AVERAGE)



PHOSPHORUS LEVELS IN JAMES LAKE

■ Good Levels    ■ Bad Levels



NITROGEN LEVELS IN JAMES LAKE

■ Good Levels    ■ Bad Levels

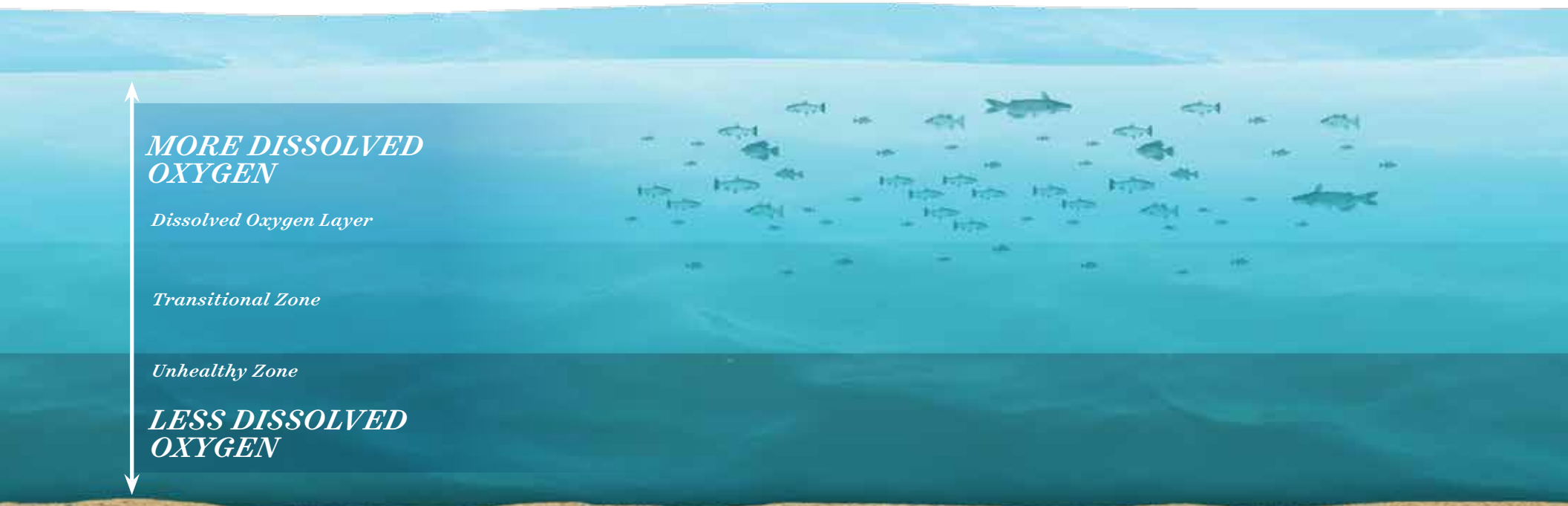
# Dissolved Oxygen

GASEOUS OXYGEN IN WATER AND AVAILABLE TO AQUATIC ORGANISMS FOR RESPIRATION

**THE EFFECTS OF DISSOLVED OXYGEN:** Dissolved oxygen is the major factor that determines where organisms can survive in an aquatic system. During the summer, many lakes become layered based on temperature — and the bottom layer is often depleted of oxygen. This is because of chemical reactions that occur when dead plants decay on the bottom. Since this layer does not mix with the other layers, it is not able to replenish its oxygen through mixing of lake waters. Oxygen depletion also occurs in the winter when surface ice keeps oxygen from entering the water from the air above.

## DISSOLVED OXYGEN LAYER

The figure below shows how far down fish and other aquatic species have enough oxygen to survive

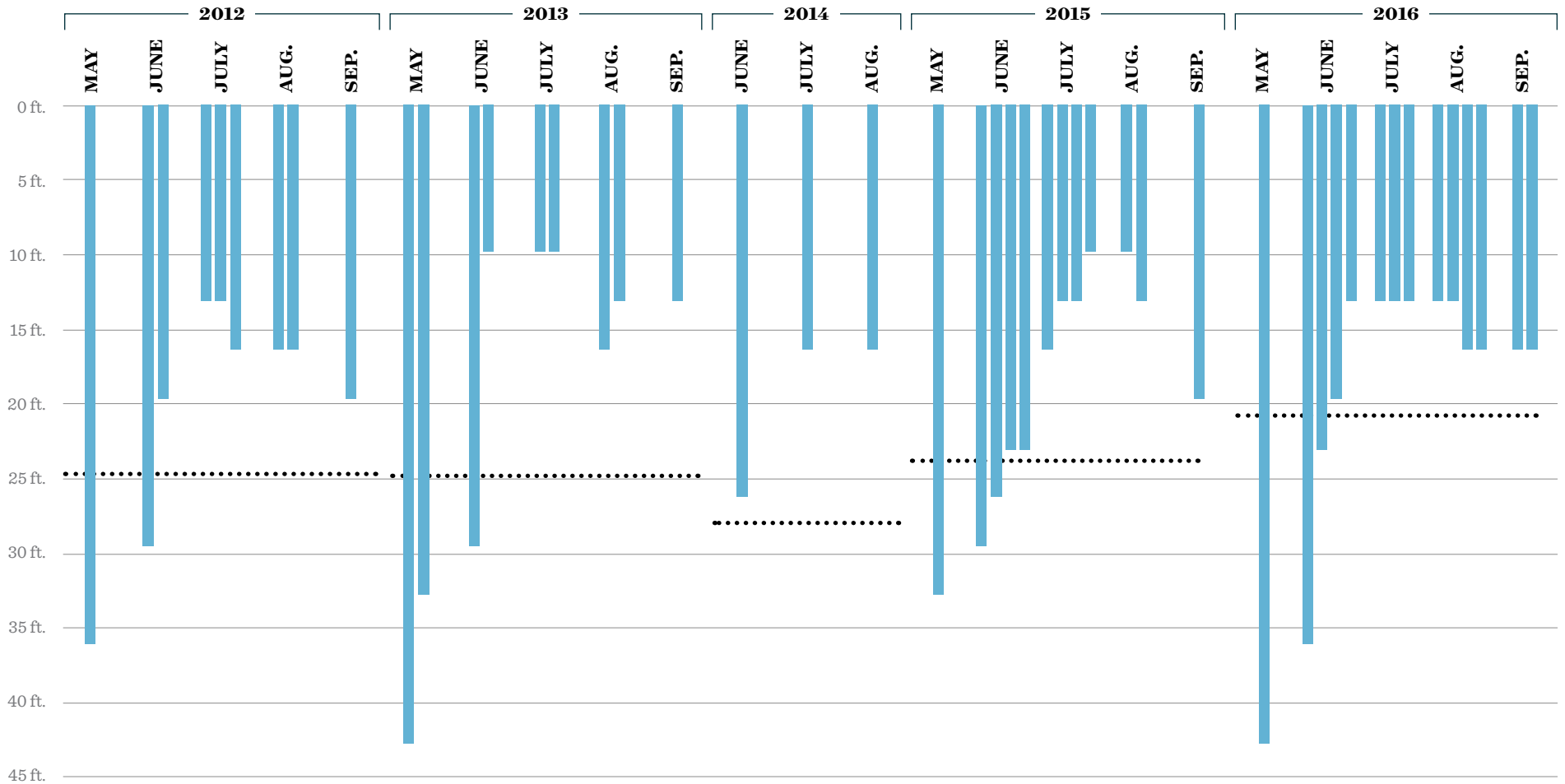


# Current Dissolved Oxygen Levels

## IN JAMES LAKE

**DATA SUMMARY:** James Lake's oxygen layer was often thinnest in the middle of the summer, squeezing fish into a smaller space and forcing them into warmer water. The oxygen layer varied among all-sports lakes in the county (partially depending on the lake depth), but James Lake's oxygen layer was usually thinner.

|| JAMES LAKE      ..... ALL-SPORTS LAKES IN COUNTY (YEARLY AVERAGE)



# Blue-Green Algae

ALSO CYANOBACTERIA; A SPECIFIC GROUP OF MICROSCOPIC ORGANISMS THAT TYPICALLY LIVE IN WATER AND USE LIGHT FOR PHOTOSYNTHESIS

**WHY ANALYZE ALGAE?** You have probably seen green or brown “scum” on the surface of the lake before. That is most likely algae. Algae can also be mixed down into the water, changing the color of the lake. Our research focused specifically on blue-green algae because it is the type of freshwater algae capable of producing health-threatening toxins.

**WHAT IS BLUE-GREEN ALGAE?** A type of algae distinguishable from other algae by its paint-like or “pea soup” appearance. This algae is actually a kind of bacteria that is often blue-green in color but can also be blue, green, reddish-purple or brown.

## HEALTH RISKS BASED ON BLUE-GREEN ALGAE LEVELS

*For recreational waters as outlined by the World Health Organization*

	LOW RISK LEVELS	MODERATE RISK LEVELS	HIGH RISK LEVELS
<b>Possible Health Problems</b>	Short-term adverse health outcomes, e.g. skin irritations, gastrointestinal illness	Potential for long-term illness with some cyanobacterial species  Short-term adverse health outcomes, e.g. skin irritations, gastrointestinal illness	Potential for acute poisoning  Potential for long-term illness with some cyanobacterial species  Short-term adverse health outcomes, e.g. skin irritations, gastrointestinal illness
<b>Typical Actions</b>	Post on-site risk advisory signs Inform relevant authorities	Watch for scums or conditions conducive to scums Discourage swimming and further investigate hazard Post on-site risk advisory signs Inform relevant authorities	Immediate action to control contact with scums; possible prohibition of swimming and other water contact activities  Public health follow-up investigation Inform public and relevant authorities

*Blue-Green Algae Layer*

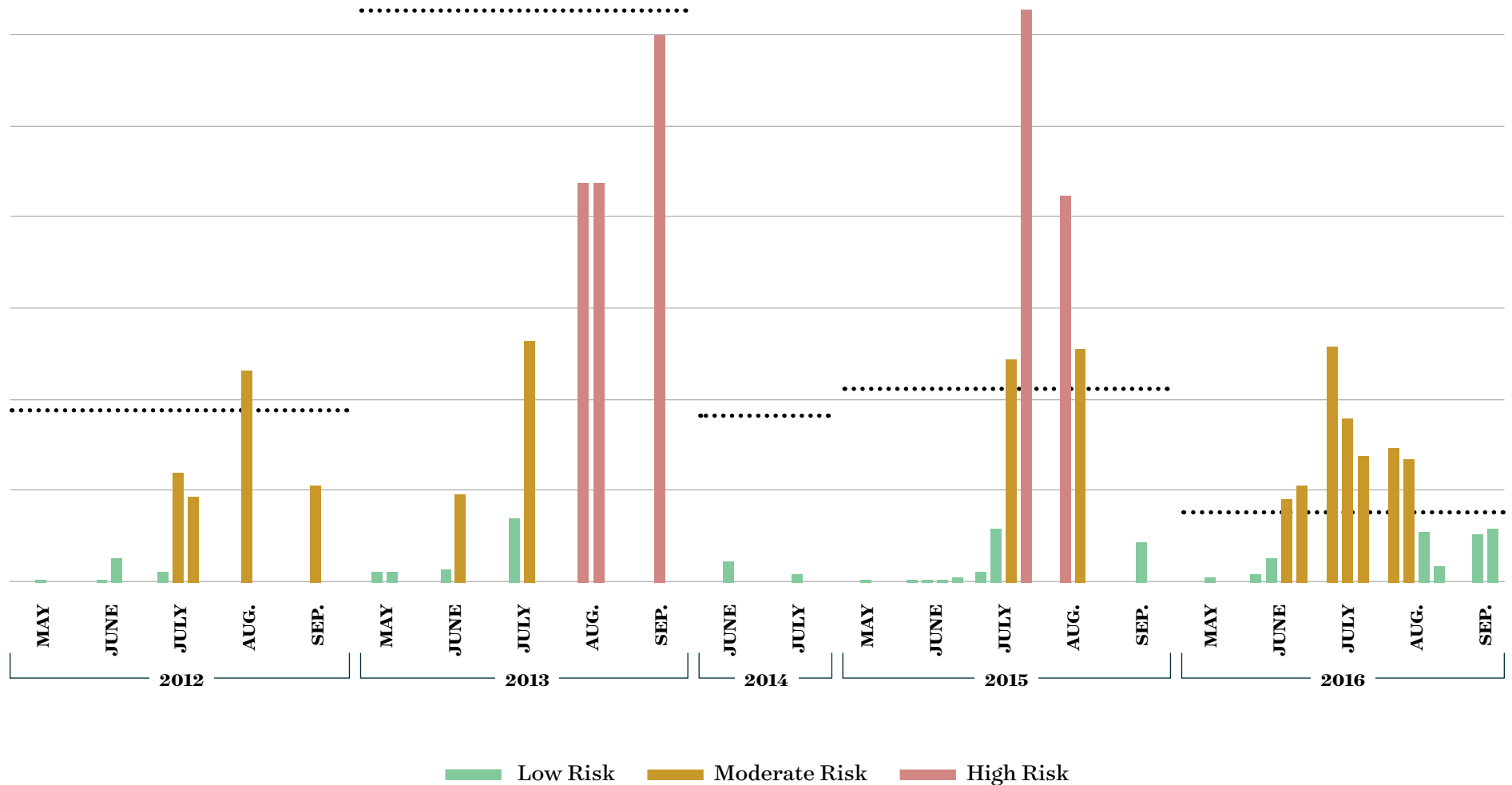


# Current Algae Levels

## IN JAMES LAKE

**DATA SUMMARY:** Blue-green algae populations in James Lake were often above human health guidelines even though the microcystin toxin levels sometimes remained low at those same times (see toxins on next page). Algae levels were in the "high risk" zone five times and in the "moderate risk" zone fifteen times in the last five years. Algae levels were substantially lower in 2014 showing the variability in blue-green algae populations. James Lake's algae levels were typically lower than other all-sports lakes studied in the county.

|| JAMES LAKE      ..... ALL-SPORTS LAKES IN COUNTY (YEARLY AVERAGE)



# Microcystin Toxin

A COMMON TOXIN PRODUCED BY BLUE-GREEN ALGAE THAT PRIMARILY TARGETS THE LIVER BUT IS ALSO A SKIN, EYE AND THROAT IRRITANT

**BLUE-GREEN ALGAE AND TOXIN LEVELS:** In addition to measuring the amount of blue-green algae in the lake, we also measured toxins produced by the algae. Both measurements are important because it is not yet understood what causes blue-green algae to release toxins – although our research planned for this summer on James Lake will likely give us more clues. A lake may have

a lot of blue-green algae but not much toxin. The ratio of blue-green algae to toxin is not consistent, so it is important to investigate both.

**WHAT IS MICROCYSTIN?** Microcystin is the most commonly studied toxin produced by blue-green algae. At high levels, microcystin can cause a variety of health problems (see chart below).

## HEALTH RISKS BASED ON MICROCYSTIN LEVELS

*For recreational waters as outlined by the World Health Organization*

	LOW RISK LEVELS	MODERATE RISK LEVELS	HIGH RISK LEVELS
<b>Possible Health Problems</b>	Short-term adverse health outcomes, e.g. skin irritations, gastrointestinal illness	Potential for long-term illness Short-term adverse health outcomes, e.g. skin irritations, gastrointestinal illness	Potential for acute poisoning Potential for long-term illness Short-term adverse health outcomes, e.g. skin irritation, gastrointestinal illness
<b>Typical Actions</b>	Post on-site risk advisory signs Inform relevant authorities	Watch for scums or conditions conducive to scums Discourage swimming and further investigate hazard Post on-site risk advisory signs Inform relevant authorities	Immediate action to control contact with scums; possible prohibition of swimming and other water contact activities Public health follow-up investigation Inform public and relevant authorities

*Sometimes blue-green algae can produce toxins*

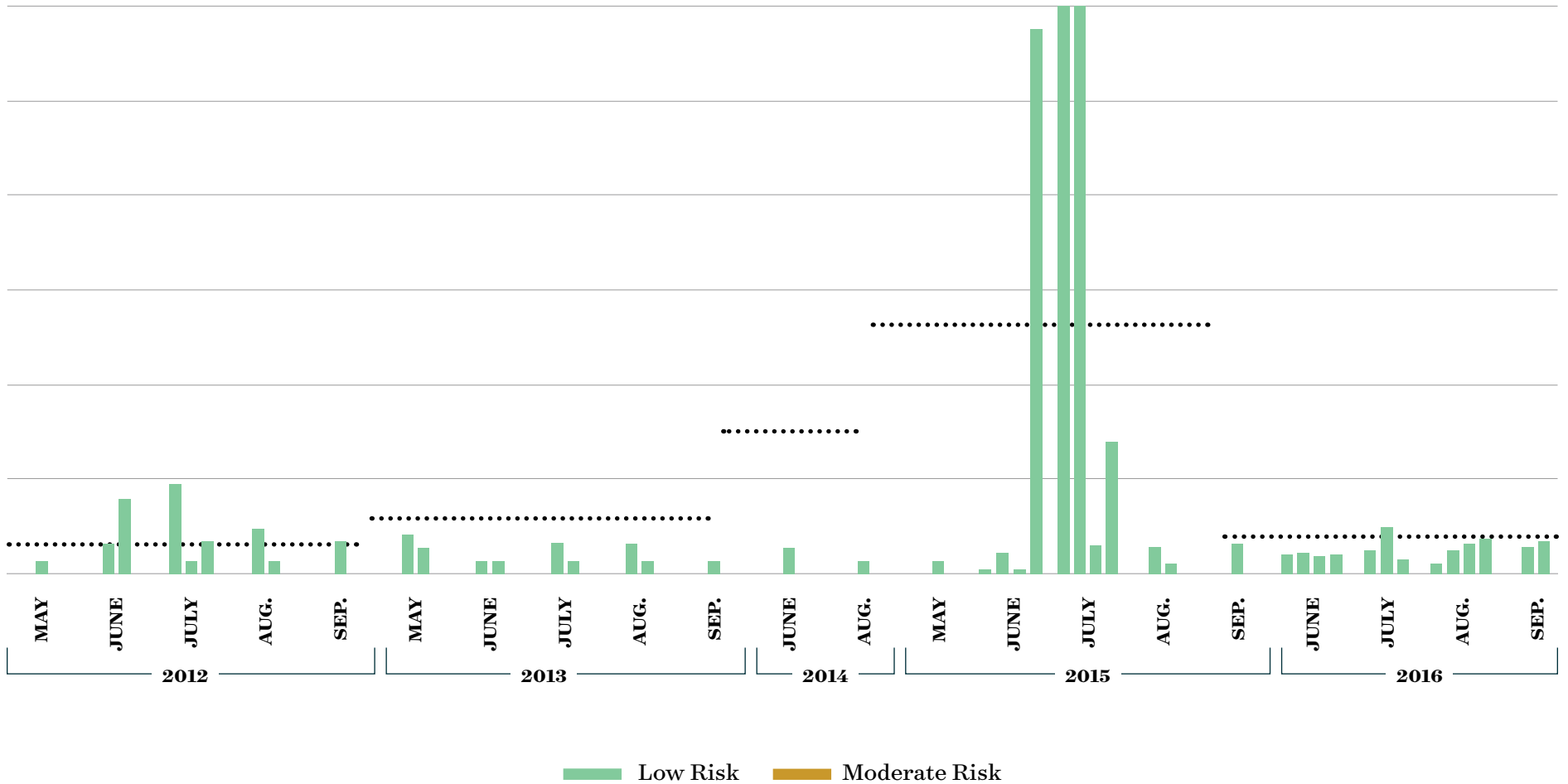




# Current Toxin Levels IN JAMES LAKE

**DATA SUMMARY:** James Lake’s microcystin levels were typically in the “low risk” zone. James Lake’s microcystin levels were typically lower than other all-sports lakes in the county. Even though James Lake’s microcystin toxin levels were below guidelines for human health, there is strong potential for future risk as reflected by the variability of the data. The lake’s blue-green algae numbers suggest that under the right conditions, such as high nutrient levels and warm temperatures, blue-green algae could produce microcystin toxin levels above human health guidelines in James Lake.

|| JAMES LAKE      ..... ALL-SPORTS LAKES IN COUNTY (YEARLY AVERAGE)



# Why the Data Matters

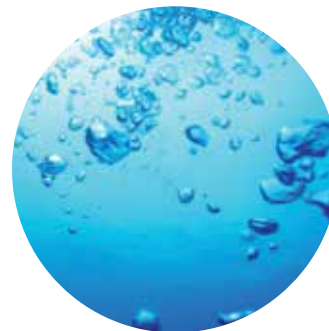
---

James Lake has a story which includes a strong research heritage stretching back over 40 years. Though this previous research was limited and sporadic, pairing it with recent research from the Lilly Center allows us to explore some possible trends in our lakes. For James Lake, these trends show us some progress and reason for hope for the future, but they also show challenges that require more focused and strategic action:



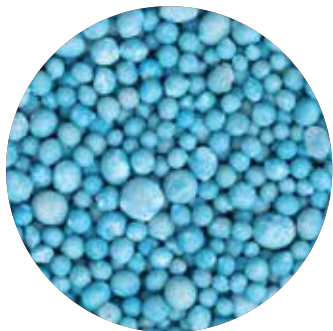
## WATER CLARITY

Past trends over the last 25 years show previous improvement in water clarity and potential declines most recently. Water clarity declines could be due to more algae growth overall, while increases in water clarity are likely due to less algae, potentially from high populations of invasive zebra mussels that eat some types of algae.



## OXYGEN LEVELS

Past trends over the last 25 years show no apparent overall changes in the oxygen layer of James Lake. Thinner oxygen layers limit the space in which fish can live and can lead to more available nutrients which encourage more algae and weed growth. Currently, fish can survive in only the top 23% of James Lake's total depth during the summer.



## PHOSPHORUS LEVELS

Past trends over the last 40 years show no obvious trends in phosphorus levels. Past and current phosphorus and nitrogen levels are all above recommended guidelines, encouraging excess weed and algae growth in James Lake.



## BLUE-GREEN ALGAE

Blue-green algae populations in James Lake are often above human health guidelines even though algae toxin levels have consistently remained low. James Lake's algae toxin levels were generally lower than other popular lakes in the county. High blue-green algae populations suggest there is still strong potential for future risk.

Some of these measures show signs of hope, while others encourage us to work even harder toward a cleaner James Lake. The Lilly Center's current research now makes county lakes, once studied sporadically and inconsistently, the most thoroughly studied in the state allowing future strategic actions based on science.



# THE FUTURE OF JAMES LAKE

At the Lilly Center for Lakes & Streams, we are increasing our momentum with cutting edge research and groundbreaking education. We are also increasing collaboration with local groups to make sure these trends reflect the positive work of so many organizations, community groups, and individuals who have been the bright spots in the lake's story.

## **THE LILLY CENTER FOR LAKES & STREAMS IS DEDICATED TO MAKING JAMES LAKE CLEAN, HEALTHY, SAFE AND BEAUTIFUL**

### **WE HAVE THE EXPERTISE AND TOOLS TO CONDUCT GUIDING RESEARCH.**

Led by a professor of freshwater science, outfitted with the necessary equipment, and growing to meet continuing community need the Lilly Center can perform high-quality research at a local level, focusing on the lakes and streams of Kosciusko County.

### **WE HAVE THE CAPACITY AND COMPETENCY TO PROVIDE RESOURCES.**

Our website is a clearinghouse of data, tools and other resources pertaining to Kosciusko County lakes and streams. Our offices house educational and scientific resources we make available to local communities and our facilities are continuing to expand. And now, the Lilly Center's presence in the community is supported into the future by our growing endowment fund.

### **WE HAVE THE BACKGROUND AND TALENT TO ENGAGE AND EDUCATE RESIDENTS.**

Our staff is experienced at national and local levels with operating K-12 and community outreach programs. Our Grace College student interns and volunteers give us the personnel we need to effectively and efficiently conduct our education programs.

### **WE HAVE THE INFRASTRUCTURE AND POSITIONING TO LEAD COLLABORATIVE EFFORTS AMONG LOCAL ORGANIZATIONS.**

Our expanding Grace College facilities accommodate meetings, workshops and other gatherings. With countywide perspective we help create working partnerships and facilitate exchanges of knowledge and expertise.

### **WE WANT OUR LAKES AND STREAMS TO BE SOMETHING WE CAN ALL BE PROUD OF, TO BE CLEAN, HEALTHY, SAFE AND BEAUTIFUL.**

By supporting the Lilly Center for Lakes & Streams you're ensuring that every effort is being made to make the lakes and streams of Kosciusko County cleaner now and into the future through ongoing research, education, and collaboration.

# Preparing for the Future

In 2015, the Lilly Center for Lakes & Streams established an endowment fund for the purpose of establishing the Lilly Center as a permanent entity in the county for groundbreaking research, community and K-12 education, and effective collaboration. Funds contributed to the endowment sustain our efforts for the health of our economy, for the health of our communities, and for the health of your children and grandchildren.

The response and support for this endowment project has been astounding. We have received gifts and pledges from individuals, businesses and organizations which have helped us raise over \$5M to be set aside in an endowment fund to provide ongoing support for the Lilly Center into the future.

Furthermore, this spring, Grace College's Lilly Center for Lakes & Streams announced its change in name. The new name acknowledges the substantial leadership gifts for the Lilly Center's endowment that were secured from Lilly Endowment, Inc. as well as from the Lilly Family through the Ruth Lilly Philanthropic Foundation.

The Lilly Center for Lakes & Streams is honored to be affiliated with the Lilly Family and their legacy of research involvement on local lakes. The Lilly Family's influence in a legacy of research excellence with Kosciusko County lakes is unmatched in our region. The Lilly Center for Lakes & Streams is committed to excellence in all our efforts to ensure that our local lakes continue to be among the most thoroughly studied in the state for generations to come.

LILLY CENTER FOR  
**LAKES &  
STREAMS**™



**GRACE**  
COLLEGE

# COLLABORATING TO MAKE KOSCIUSKO COUNTY LAKES CLEANER

James Lake is best served as these organizations continue to grow in partnership as each brings important impact in their unique areas of expertise:

---



**LAKE TIPPECANOE PROPERTY OWNERS** "The Lake Tippecanoe Property Owners was formed in 1944 as the Lake Tippecanoe Protective Association. It was founded largely for the purpose of preserving the beauty and health of the lake. Today, we still have that as a primary goal." However, to meet the present challenges facing waterways, LTPO's goals have been expanded and are, "To preserve and protect the ecology; encourage only those uses of property around the lake which will produce a positive impression and a positive environmental impact; to prevent dangerous, injurious, or noxious conditions such as pollution, unsanitary conditions, or overcrowding on land or water." For more information, visit [ltpo.org](http://ltpo.org).

---



**THE WATERSHED FOUNDATION (TWF)** was founded in 1997 to protect and improve water quality in our local lakes and streams. TWF takes action by stopping pollution at its source. The Foundation achieves success by installing water quality improvement projects on the land, empowering landowners to make clear choices for clean water, and leading partnerships throughout the upper Tippecanoe River watershed. For more information, visit [WatershedFoundation.org](http://WatershedFoundation.org).

---



**LILLY CENTER FOR LAKES & STREAMS AT GRACE COLLEGE** Established in 2007, the Lilly Center for Lakes & Streams is dedicated to conducting research, providing lake and stream education, and collaborating with other groups to make James Lake and other county lakes clean, healthy, safe and beautiful. For more information, visit [lakes.grace.edu](http://lakes.grace.edu).

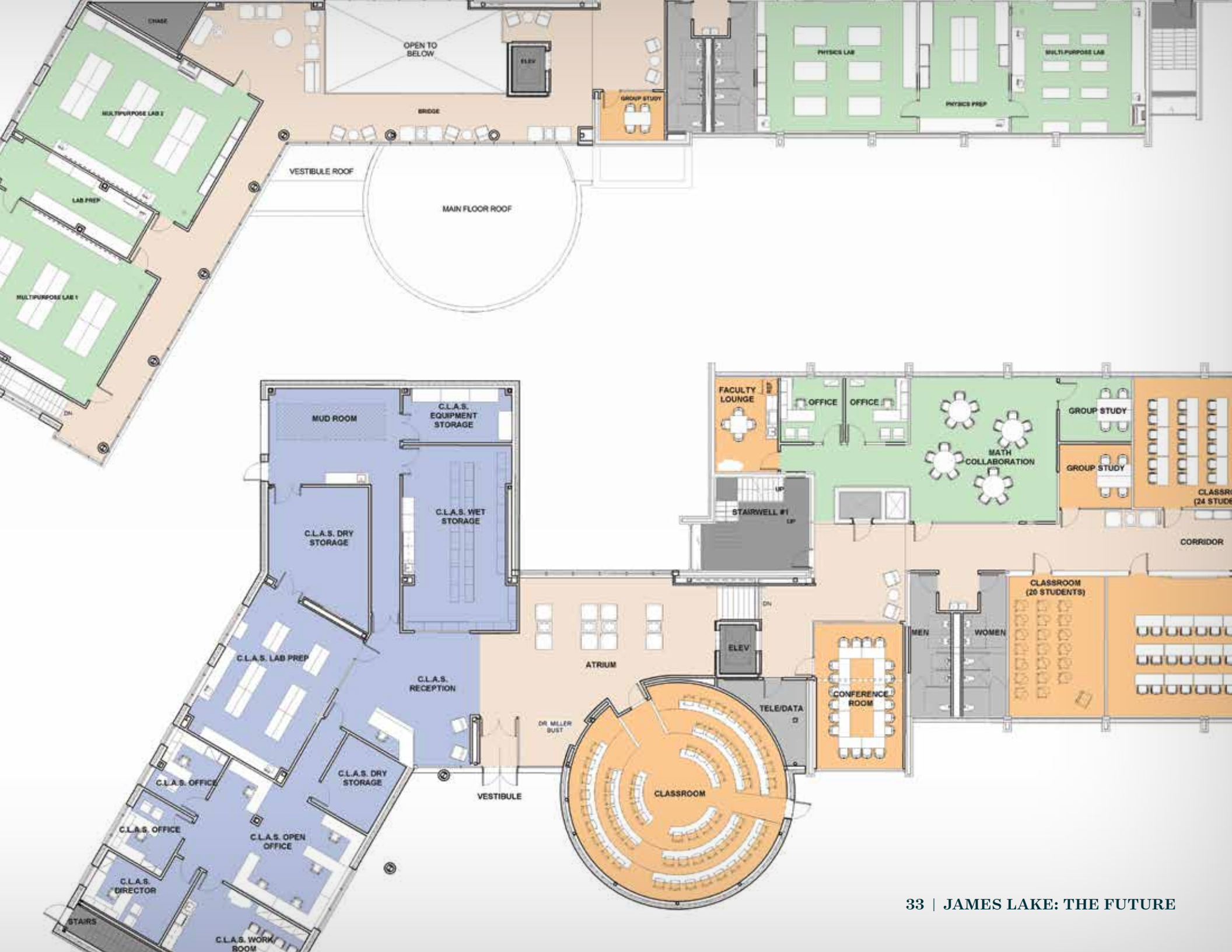
# New Facilities

The Lilly Center for Lakes & Streams has experienced great growth in programming, research, staff, and community involvement over the last decade. New facilities will feature state-of-the-art laboratory space, community and educational resources, increased storage space which will allow for program expansions, and collaborative office space.

The Lilly Center for Lakes & Streams is looking forward to the construction of new facilities. Grace College is beginning construction on a new science facility: the Dr. Dane A. Miller Science Complex this summer. With major funding by Dr. Dane and Mary Louise Miller, Zimmer Biomet, K21 Health Foundation, and friends of Grace College, the new facility will include specifically designed and dedicated space for the Lilly Center. This space will help the Lilly Center increase its impact in the community.







# JAMES LAKE HAS A GREAT STORY. NOW IT IS YOUR TURN TO HELP WRITE THE NEXT CHAPTER.

---

James Lake and other Kosciusko County lakes have shaped not only our local landscape, but each of our lives. Our endowment fund is one way to ensure that these resources are always studied, monitored, and never forgotten. But, making and keeping them clean is up to you.

---

Making our lakes and streams cleaner is more important than ever. The health of our lakes is directly linked to the health of the local economy, the health of your children and grandchildren, and the health of our greater community.

Endowment funds ensure the Lilly Center's presence, but ensuring continual program growth in areas of groundbreaking research, K-12 and community education, and collaboration with partner groups can only be accomplished through your ongoing support.



# What you can do to help:



## REDUCE FERTILIZER USAGE ON YOUR LAWN AND GARDEN

(especially close to the lake) to save yourself some money and keep extra nutrients out of James Lake. If you want to know exactly how much nutrients your lawn or garden needs, the Lilly Center for Lakes & Streams can help you with soil testing resources.



## EXPAND COLLABORATIVE RELATIONSHIPS AND PROJECTS WITH NON-LAKE RESIDENTS.

Water flows downhill, so neighborhoods, industries, farmers and businesses in areas surrounding James Lake all influence the lake. Your support and participation has allowed the Lilly Center for Lakes & Streams to pursue these efforts, and we look forward to working with you to expand them.



## ADD BEAUTIFUL VEGETATION ALONG YOUR SHORELINE

to filter out nutrients as water carries them toward the lake. Native plants (those plants that occur naturally in our region) are best because they cut down on your maintenance costs and provide the best filtration. The Lilly Center for Lakes & Streams has information to help you get started.



## PROVIDE FINANCIAL SUPPORT

toward research to solve the identified challenges facing James Lake. The Lilly Center samples inflowing and outflowing streams and can use this data to start quantifying nutrient sources. This will help us navigate future efforts toward efficiently reducing these nutrient sources. Your financial support helps us pursue strategic actions based on science.



## AVOID YARD WASTE ENTERING THE LAKE.

Leaves, grass clippings or other yard waste have nutrients which increase algae growth, reduce water clarity and lead to less oxygen for fish. Use this yard waste as compost in your garden to further reduce your fertilizer use or have it removed from your property. If you would like to start composting and need some direction, the Lilly Center for Lakes & Streams can help.



## ENGAGE OUR LAKE NEIGHBORS AND OUR NON-LAKE COMMUNITY MEMBERS

in educational programs that inform them about how to best take care of James Lake. You might consider helping as a volunteer for the Northern Indiana Lakes Festival or financially supporting one of our K-12 programs.

# Making the Lake the Best it Can Be

The Tippecanoe Lakes, specifically Oswego Lake, have played an important role in John Warren's family.

John has spent the last 30 years enjoying Oswego Lake and explained, "There's just a natural beauty to the lake that I've grown to appreciate." In the mid-1980s, John's sister and brother-in-law bought a boat and rented dock space at Patona Bay. The family would go on boat rides and enjoy cookouts on the lake. John's parents, Bill and Molly, also purchased a home in 1990 so the family could enjoy lake living. John's sister and brother-in-law even bought a home on the lake and five years ago, John and his wife, Lisa, purchased a home on Oswego Lake across from his parents' home.

John mentioned that the lake adds value to the surrounding community recreationally and, in turn, economically: "The quality of life that clean, healthy lakes bring to the community is important," John elaborated. He explained that preserving local lakes for future generations is vital and that some of his favorite memories are of, "...watching my son, nieces and nephews grow on the lake and enjoy it."

As a supporter of groups such as the Lake Tippecanoe Property Owners, The Watershed Foundation, and the Lilly Center for Lakes & Streams, John is doing his part to care for Oswego Lake. He explained that he is a strong proponent of lake enhancement initiatives, has a glacial stone wall along his lakefront shoreline, and uses non-phosphorus fertilizer on his yard. John added, "It's so important that both lake residents and community members not take our lakes for granted."

---

*It's so important that both lake residents  
and community members not take our lakes  
for granted.*

---

In the future, John hopes that life on Oswego Lake does not look much different, but that its natural beauty is preserved for generations to come.



# *It's time to make a difference.*

If you would like to support the Lilly Center for Lakes & Streams in our efforts to make your lake clean, healthy, safe and beautiful through groundbreaking research, K-12 and community education, and collaboration, you may enclose your donation in the envelope included. All gifts are tax-deductible and 100% of funds go directly to the Lilly Center to support our work.

Interested in making a difference in your lake for future generations? Call us at 574-372-5100 x6445 to talk to us about planned and estate giving options.

## **DONATE ONLINE**

Would you like for your gift to start making a difference in your lake's health right away? Just visit our website and click "Donate Now".

*[lakes.grace.edu](http://lakes.grace.edu)*



## **REFERENCES:**

1. What is a Secchi? (2015, April 29). Retrieved April 11, 2017, from <http://www.secchidipin.org/index.php/monitoring-methods/the-secchi-disk/what-is-a-secchi/>.
2. Who We Are. (n.d.). Retrieved April 11, 2017, from <https://www.iisd.org/ela/about/who-we-are/>
3. Bruckner, M. C. (2017, April 6). The Winkler Method - Measuring Dissolved Oxygen. Retrieved April 11, 2017 from [http://serc.carleton.edu/microbelife/research\\_methods/environ\\_sampling/oxygen.html](http://serc.carleton.edu/microbelife/research_methods/environ_sampling/oxygen.html)

Historic images courtesy of the Indiana Historical Society.





**200 SEMINARY DRIVE | WINONA LAKE, IN 46590**

**574-372-5100, ext. 6445**

*[lakes.grace.edu](http://lakes.grace.edu)*